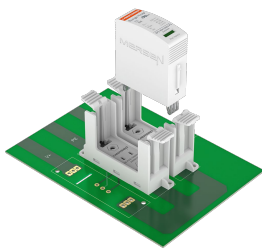


# Surge-Trap® PCB Socket

**SURGE PROTECTION COMPONENTS FOR OEM DESIGNERS**

PLUG-IN SURGE PROTECTION FOR PCB



SB PCB is the series of socket bases that allow for integration of Mersen's pluggable IEC surge protection cartridges directly on printed circuit boards. Those surge cartridges will be easily replaceable upon reaching their end of life. SB PCB is an optimal solution for the industry of power electronics: inverters, converters, control panels for railway, PV combiner boxes, machines, OEM equipment, etc. Key benefits are cost efficiency, space efficiency, no wiring and optimal voltage protection of sensitive electronics. Integration of surge protection on PCBs is often planned for at an early stage of development of the system. The surge sockets will be firmly fixed to the PCB during the wave soldering process. They'll host the entire range of IEC surge protection cartridges AC & DC, T2 & T1.

## TECHNICAL DATA OVERVIEW

Class	Type 1+2 & Type 2 to IEC
Voltage Range AC	60 ... 850 VAC
Voltage Range DC	660 ... 1500 VDC
Body Material	PA66 CT1; V-0
System type	Y PV, U PV, TT, TNS, TNC, IT, multiple MPPT
Number of Poles	1
Format	PCB mounted
Temperature range	-40 ... 85 ° C
Package	96 units

## FEATURES & BENEFITS

- Single pole sockets
- Up to 1500 Vdc
- Type 1 & Type 2 according to IEC 61643-11
- Remote end of life indicators
- Mechanically coded bases to avoid cartridge replacement errors
- Vibration proof design according to EN 60721-3-3
- Cost and space saving
- No wiring
- Optimal voltage protection

## APPLICATIONS

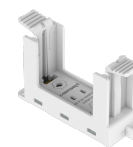
- Photovoltaic, wind & railway



MERSEN reserves the right to change, update or correct, without notice, any information contained in this datasheet.

# Surge-Trap® PCB Socket

## PRODUCT RANGE



SB-PCB-1000PV-M

### Photovoltaic (DC)

Catalog number	Item number	U <sub>cpv</sub>	Remote	Cartridge No L-N
SB-PCB-1000PV-M	83050133	1000 VDC	Yes	SP2-40K1000V-PV
SB-PCB-1500PV-M	83050135	1500 VDC	Yes	SP2-40K1500V-PV



SB-PCB-275V-M

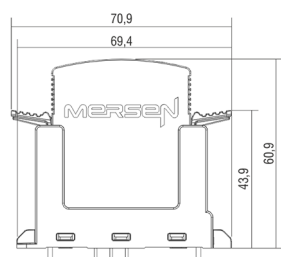
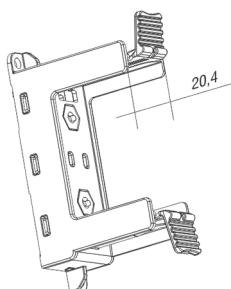
### AC

Catalog number	Item number	U <sub>c</sub>	Remote	Cartridge No L-N
SB-PCB-275V-M	83050119	275 V	Yes	SP2-40K275V
SB-PCB-320V-M	83050121	320 V	Yes	SP2-40K320V
SB-PCB-440V-M	83050123	440 V	Yes	SP2-40K440V
SB-PCB-750V-M	83050127	750 V	Yes	SP2-30K750V

## DIMENSIONS

### 1 Pole

### Front view



MERSEN reserves the right to change, update or correct, without notice, any information contained in this datasheet.